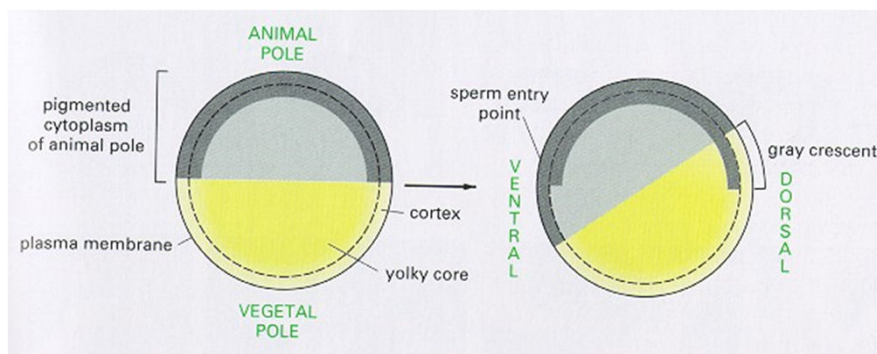


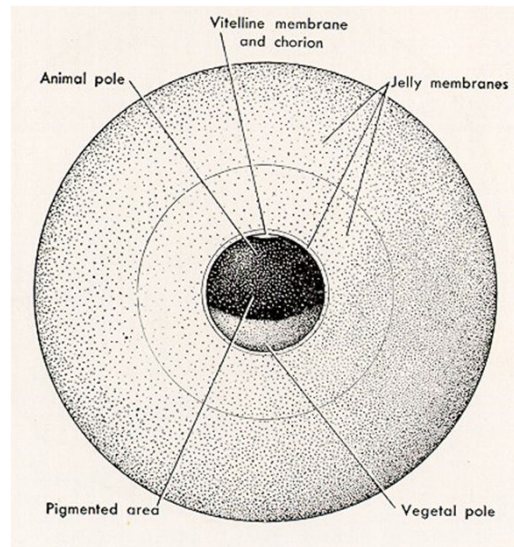
*Xenopus laevis*



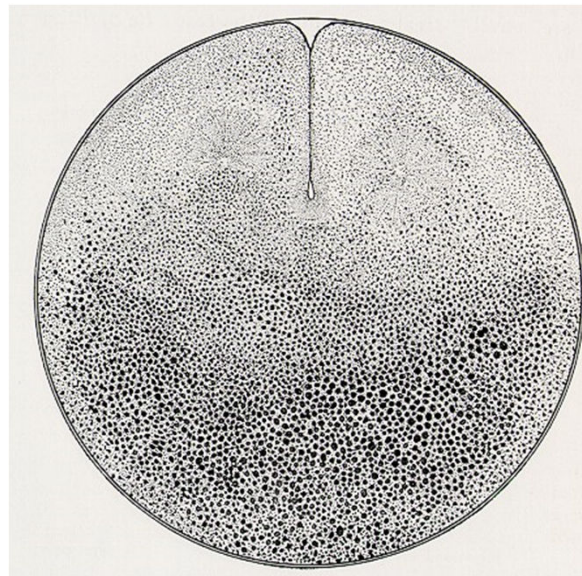
**Primeiro movimento morfofénico após a fertilização de um ovo de anfibio**



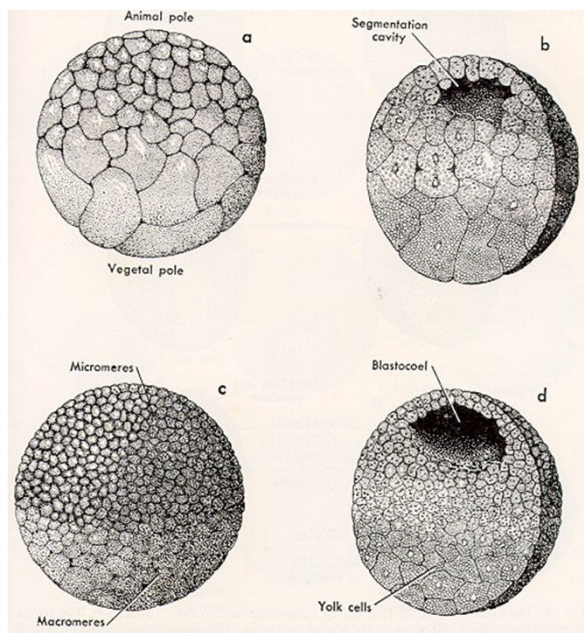
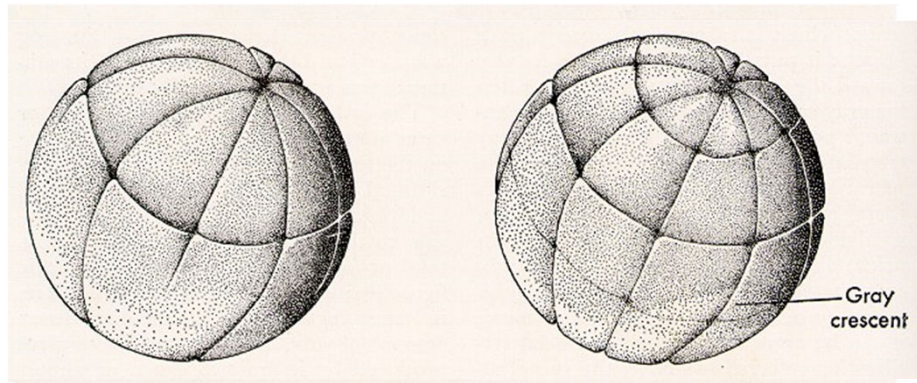
### Ovo de uma rã e seus envoltórios



### Zigoto de rã na telófase da primeira clivagem



### Clivagens no zigoto de rã

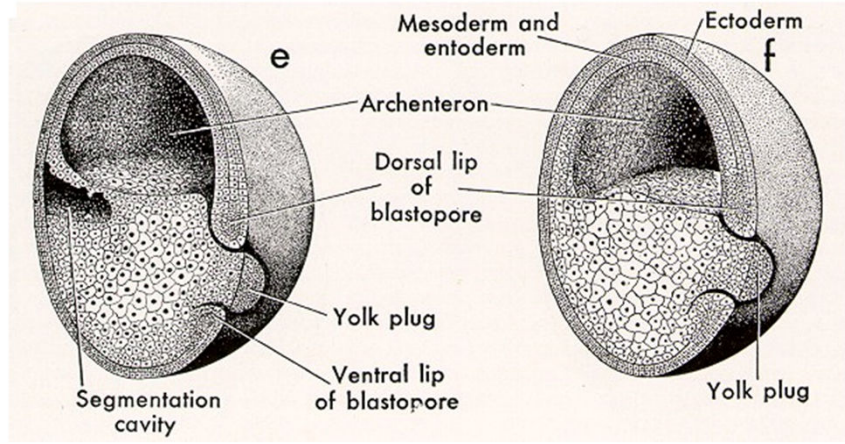


### A blástula

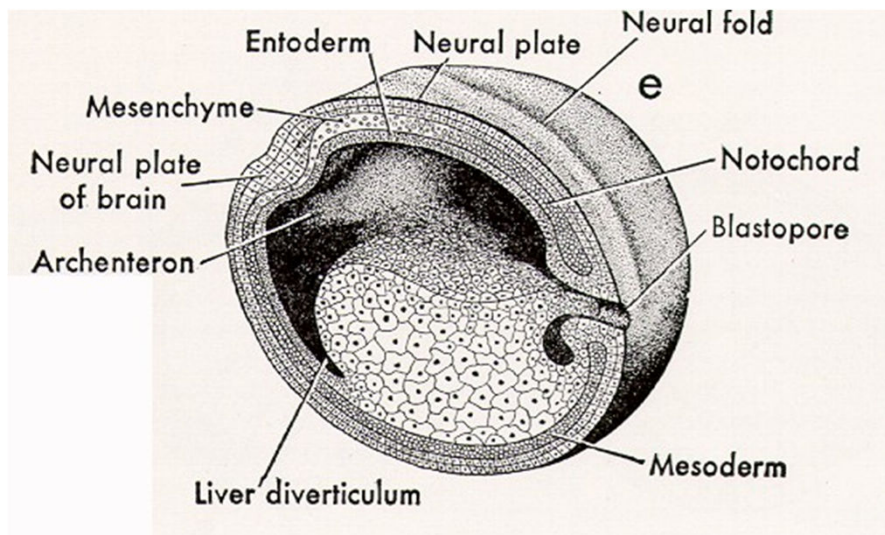
a & b = inicial  
c & d = tardio



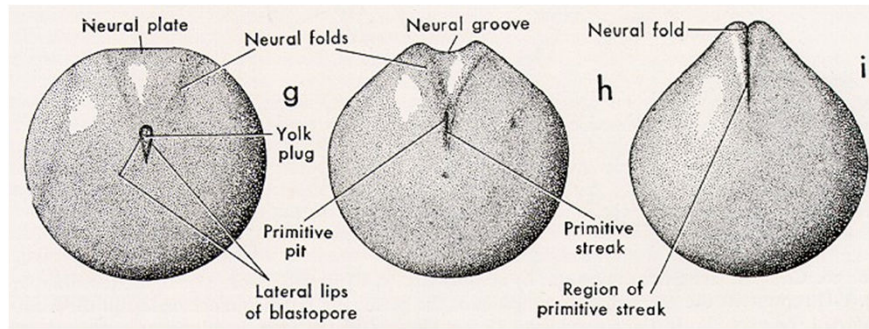
### O desenvolvimento de blástula até gástrula



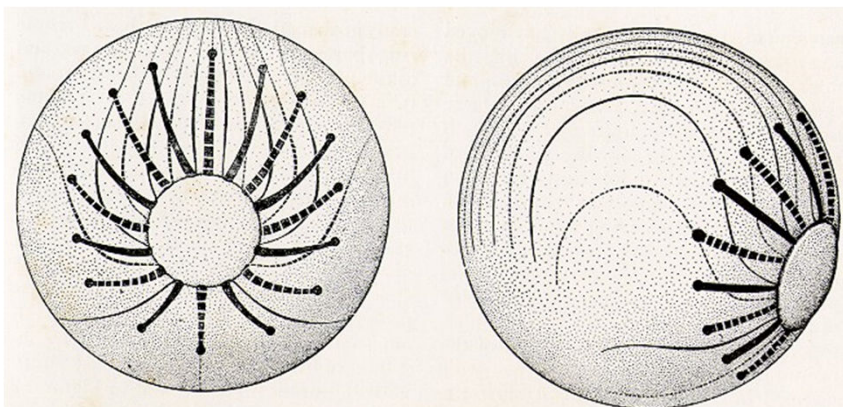
### O desenvolvimento de blástula até gástrula



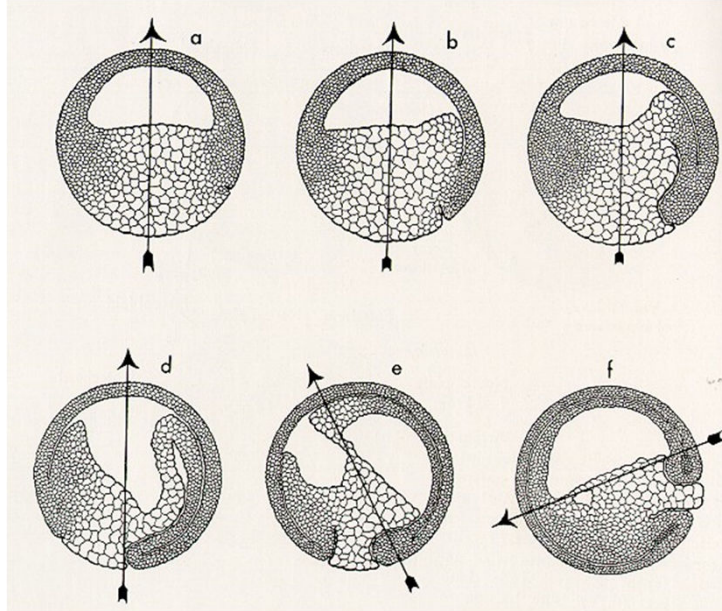
### A gastrulação vista do lado do blastóporo (posterior)



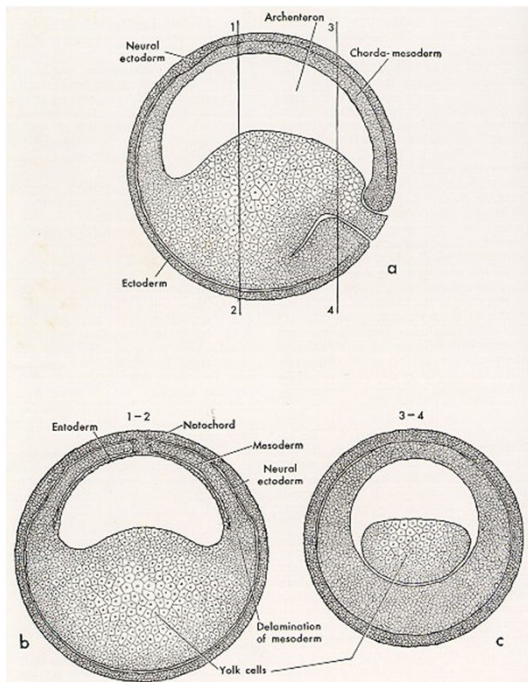
### Esquema da gastrulação no ovo de anfíbio



**Esquema da polaridade e rotação na gástrula de rã**



**Secção longitudinal da gástrula de uma rã**





### Formação do tubo neural a partir da placa neural

